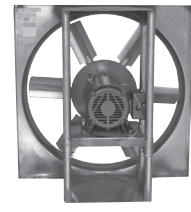


COMMERCIAL VENTILATION SYSTEMS THAT ENABLE THE WORLD TO BREATHE BETTER AIR

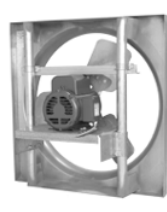
PROPELLER SIDEWALL SYSTEMS



ACF
Downblast Direct Drive Exhaust Fan
Size 48 | 20,300 CFM



DDE/DDS
High Pressure Direct Drive Exhaust/Supply Fan
Size 24-60 | 3,500-55,800 CFM



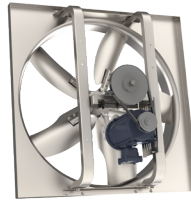
DFE/DFS
Medium Pressure Direct Drive Exhaust/Supply Fan
Size 10-30 | 37-12,415 CFM



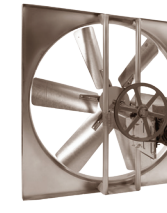
GED/GSD
Low Pressure Direct Drive Exhaust/Supply Fan
Size 10-20 | 227-3,885 CFM



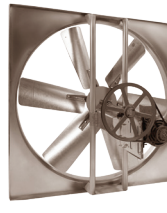
eGED/eGSD
Low Pressure Direct Drive Exhaust/Supply Fan with EC Motor
Size 12-20 | 489-3,718 CFM



LCE/LCS
Low Pressure Direct Drive Exhaust/Supply Belt Drive Model
Size 20-60 | 2,783-40,855 CFM

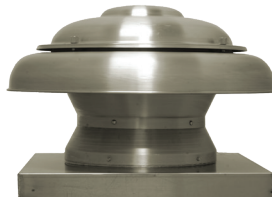


L2E/L2S
Medium Pressure Direct Drive Exhaust/Supply Belt Drive Model
Size 24-60 | 2,733-47,161 CFM



L3E/L3S
High Pressure Direct Drive Exhaust/Supply Belt Drive Model
Size 42-72 | 21,683-85,089 CFM

PROPELLER ROOF VENTILATORS



ARE/ARS
Dome Axial Power Roof Exhaust/Supply Fan with Direct Drive
Size 100A-201A | 167-2,827 CFM



HREB-C/HREB-P
Hooded Exhaust Fan with Belt Drive
Size 24-72 | 1,159-93,240 CFM



HRED-C
Hooded Exhaust Fan with Direct Drive
Size 24-60 | 1,193-48,780 CFM



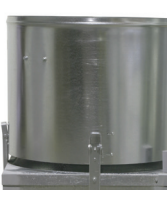
HRSD
Hooded Supply Fan with Belt Drive
Size 24-60 | 2,979-52,534 CFM



HRSD
Hooded Supply Fan with Direct Drive
Size 24-54 | 2,509-50,109 CFM



TUB/TUB-HT/TUB-P
Tubaxial Upblast Exhaust Fan with Remote Drive
Sizes 24-60 | 4,321-60,116 CFM



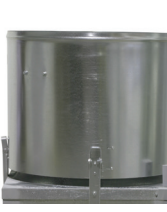
UBB
Upblast Exhaust Fan with Belt Drive
Size 24-72 | 3,254-70,800 CFM



UBS/UBS-P
Upblast Exhaust Fan with Belt Drive
Size 24-60 | 3,732-58,500 CFM

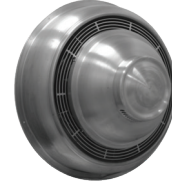


UBSRD/UBSRD-HT/UBSRD-HTI/UBSRD-P
Upblast Exhaust Fan for Heat and Smoke Removal with Remote Drive
Size 24-60 | 4,977-50,459 CFM

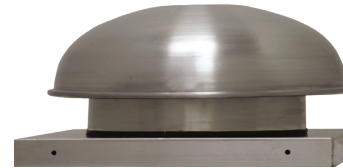


UBX
Upblast Exhaust Fan with Direct Drive
Size 24-72 | 5,200-65,500 CFM

CENTRIFUGAL ROOF AND SIDEWALL MODEL



CWD
Direct Drive Centrifugal Sidewall Exhaust Fan
Size 7-16 | 66-3,360 CFM



LPD
Low Profile Direct Drive Exhaust
Size 6-8 | 43-423 CFM



SDB
Downblast Exhaust Fan
Size 6-48 | 41-31,563 CFM



SDBD
Downblast Direct Drive Exhaust Fan
Size 6-16 | 53-4,984 CFM



SDBDe
Downblast Direct Drive Exhaust Fan with EC Motor
Size 6-18 | 53-4,733 CFM



STXB/STXB-RHUL/STXB-HT/STXB-HT
Upblast Exhaust Fan
Sizes 8-48 | 201-37,920 CFM

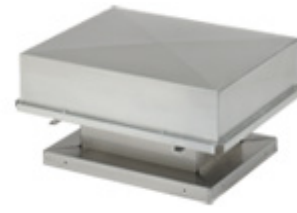


STXD/STXD-RHUL
Upblast Direct Drive Exhaust Fan
Size 6-16 | 56-4,781 CFM

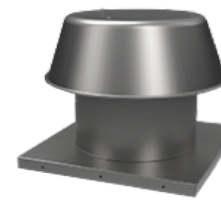


STXDe/STXDe-RHUL
Upblast Direct Drive Exhaust Fan with EC Motor
Size 6-18 | 56-4,492 CFM

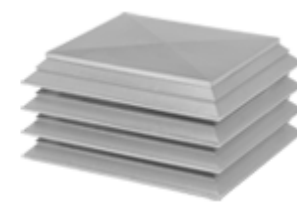
GRAVITY VENTS INTAKE/RELIEF



BGH
Fabricated Gravity Relief/Intake Ventilator
Size 12 x 12-72 x 144
536-90,000 CFM

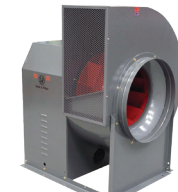


RCXII/RCXII-SF
Gravity Relief/Intake Ventilators
Size 6-36 | 90-10,378 CFM



RLX
Louvered Penthouse
Size 12 x 12-84 x 144
536-69,500 CFM

UTILITY EXHAUST/SUPPLY FAN



CM/CM-RHUL/CM-HT
Belt Drive Utility Vent Set
Sizes 10-36 | 499-23,958 CFM

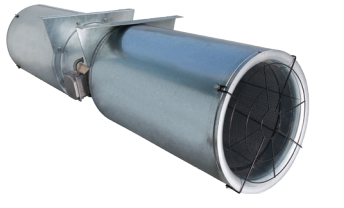
JET FAN SERIES



IFAB/IFEB
Low Profile Centrifugal Jet Fans
Size 12N | 1,350-1,530 CFM

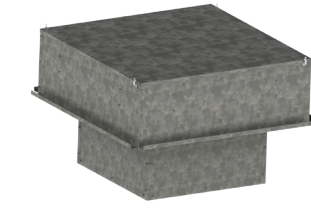


IFFT/IFFTe
Centrifugal Jet Fan
Size 30N-100N | 1,754-5,498 CFM

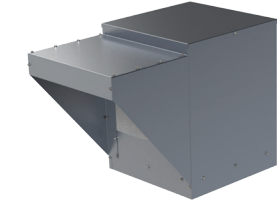


TJFU
Medium Pressure Direct Drive Exhaust/Supply Fan
Size 315-400 | 1,560-6,474 CFM

BELT DRIVE ROOF SUPPLY FAN



CSF
Centrifugal Filtered Roof Supply Fan
Size 9-20 | 475-12,520 CFM



KSFV
Kitchen Supply Fan
Size 9-20 | 475-12,600 CFM



LSF
Centrifugal Filtered Roof Supply Fan
Size 9-20 | 475-12,520 CFM

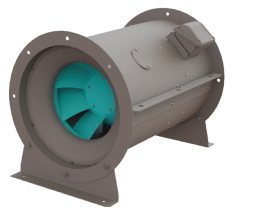
CENTRIFUGAL INLINE MODEL



CFD
Forward Curved Belt Drive Inline Duct Blower
Size 7-15 | 200-5,800 CFM



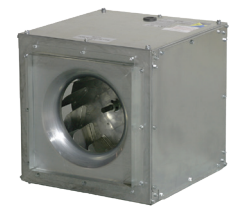
CTB/CTB-RHUL
Belt Drive Inline Tubular
Size 9-42 | 300-20,300 CFM



SMXDK/SMXDK-HT
Direct Drive Mixed Flow Fan
Size 9-30 | 350-24,500 CFM

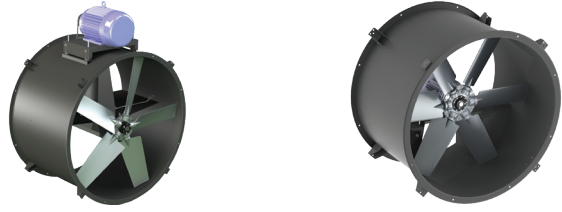


SQB
Belt Drive Square Inline Fan
Size 7-42 | 86-24,544 CFM



SQD/eSQD
Direct Drive Square Inline Fan
Size 6-15 | 83-3,720 CFM

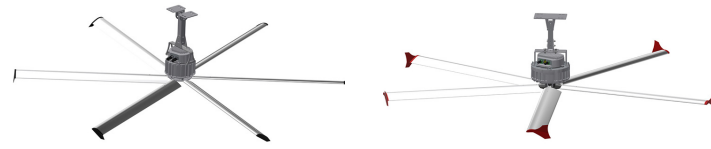
INLINE TUBEAXIAL FANS



TDB
Belt Drive Inline Tubeaxial
Size 12-60 | 914-75,490 CFM

TDD
Direct Drive Inline Tubeaxial
Size 12-48 | 816-39,194 CFM

HIGH VOLUME LOW SPEED FANS



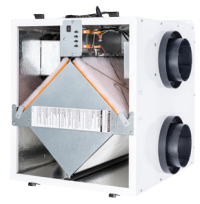
TEMPEST ⚡
6-Blade HVLS
Size 8-16

TORNADO ⚡
5-Blade HVLS
Size 10-24

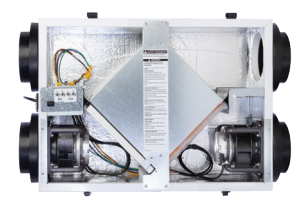
ENERGY RECOVERY VENTILATORS (ERVS)



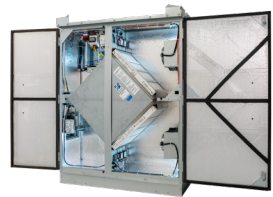
TR
Total Recovery Series for Residential and Light Commercial Use
Size 90-200 | 40-206 CFM



TRe ⚡
Total Recovery Premium Series with EC Motors for Residential and Light Commercial Use
Size 90-300 | 35-288 CFM



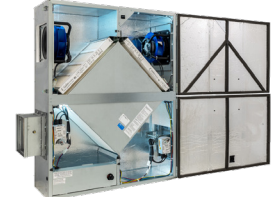
TRLPe ⚡
Total Recovery Low Profile Model with EC Motors for Residential and Light Commercial Use
Size 110 | 34-138 CFM



TRC-RT
Commercial ERV Series for Outdoor/Rooftop Installation
Size 500-1600 | 166-1853 CFM

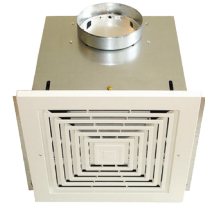


BACNET FAN CONTROL
BTL-listed Accessory Connecting ERVs with BMS



TRC/TRCe/TRCeN ⚡
Commercial ERV Model for Indoor Installation
Size 500-1200 | 133-1163 CFM

RESIDENTIAL VENTILATION SYSTEMS



LOSONE SELECT SERIES
Ceiling and Cabinet Ventilators
Size 100-700 | 44-701 CFM



MD, MDX-ES24VK KITS
Motorized Dampers
Size 4"-14" | Kits: 4"-8"



PCD ⚡
Premium Choice DC Motor Series
Size 80-110 | 80-140 CFM



PCLPD100XHP
Premium Choice DC Motor Low Profile with Humidity Sensor
Size 100 | 30-100 CFM



PCLPXP
Premium Choice Low Profile XP Series
Size 80-100 | 80-100 CFM



PCV
Premium Choice Value Series
Size 50-80 | 50-80 CFM



PCXP
Premium Choice AC Motor Series
Size 50-150 | 50-150 CFM



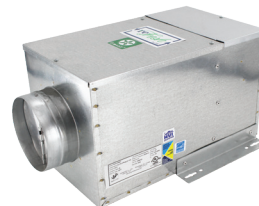
PRF
Radon Mitigation Fan
Size 100 | 150 CFM



PV-DEDPV
Dryer Exhaust Duct Power Ventilator
UL 705 Listed for Gas, Electric Dryers
130 CFM



PV-POWER VENT
Inline Centrifugal Duct Fan
Size 100X-315X | 153-943 CFM



reRefresh ⚡
Filtered Supply Fan
Size 8-10 | 7-182 CFM



SWF
Sidewall Fan
Size 100-200 | 26-416 CFM

THE BEST WAY TO MOVE AIR THROUGH ROUND DUCT



TD
Inline Mixed Flow Duct Fan
Size 100-400 | 101-3,127 CFM



TD-SILENT
Inline Mixed Flow Duct Fan
Size 125X-200 | 28-502 CFM

ENSURES COMPLIANCE WITH OUTSIDE AIR CODES



ES24V
EnviroSense Ventilation Control Outside Air Controller



RESIDENTIAL AND COMMERCIAL PRODUCT LINE OVERVIEW



FIND SPECIFICATIONS, SUBMITTALS AND MORE AT SOLERPALAU-USA.COM/PRODUCTS.HTML

S&P USA VENTILATION SYSTEMS, LLC
6393 Powers Avenue; Jacksonville, FL 32217
SolerPalau-USA.com | 800.961.737

Soler&Palau
Ventilation Group
03272026

S&P CANADA VENTILATION PRODUCTS, INC.
6710 Maritz Drive, Unit 7; Mississauga, ON L5W 0A1
SolerPalauCanada.com | 416.744.1217