



SCO2 Sensor

ACCESSORY

Supplemental Installation Manual



SCO2-W

1.0 OVERVIEW	3
2.0 DIMENSIONS	3
2.1 CO2-W	3
3.0 ELECTRICAL	4
3.1 WIRING SCHEMATICS	4

TABLE OF ILLUSTRATIONS

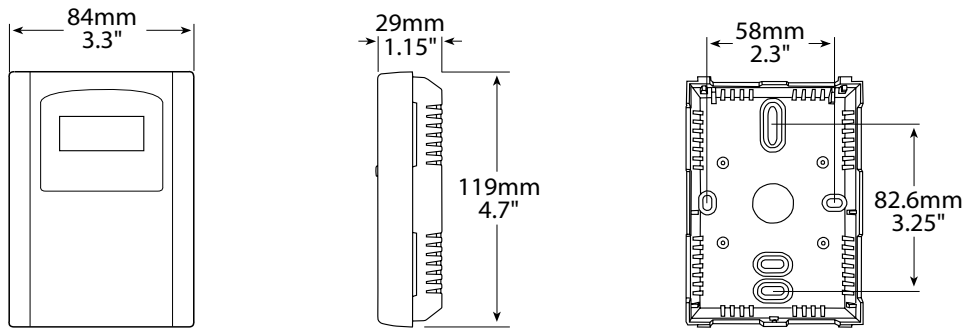
Figure 3.1.0 Wiring Schematic for TR90, TR130, and TR200 Units Only	4
Figure 3.1.1 Wiring Schematic for TRe and TRLPe-Series Units	4
Figure 3.1.2 Wiring Schematic for TReN and TRLPeN-Series Units.....	5
Figure 3.1.3 Wiring Schematic for TRCeN500, TRCeN800, TRCeN1200, and TRCeN1600 Units with ECM and Circuit Board.....	5
Figure 3.1.4 Wiring Schematic for TRCeN500, TRCeN800, TRCeN1200, and TRCeN1600 Units with ECM and Circuit Board and Timer	6

1.0 OVERVIEW

The SCO2 monitor uses a highly accurate and reliable Non-dispersive Infrared (NDIR) with state-of-the-art digital linearization and temperature compensated circuitry to detect CO2 levels in an attractive, low profile enclosure for room applications and a duct mount version. It provides a linear analog signal output of 4–20 mA, 0–5, or 0–10 VDC and a Normally Open (NO) relay to control an alarm or ventilation fan in various ways.

2.0 DIMENSIONS

2.1 CO2-W



3.0 ELECTRICAL

3.1 WIRING SCHEMATICS

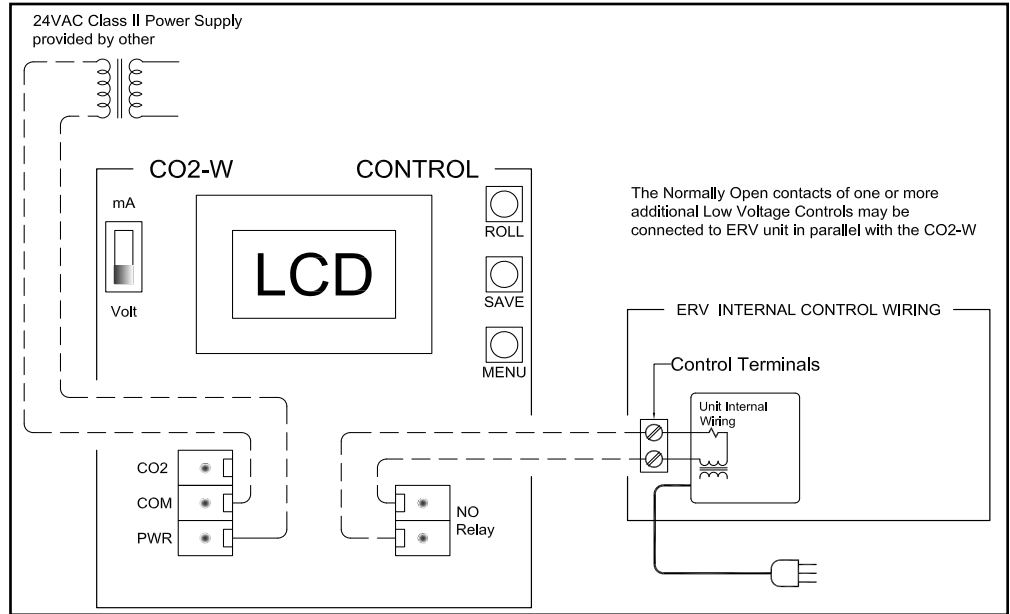


FIGURE 3.1.0 WIRING SCHEMATIC FOR TR90, TR130, AND TR200 UNITS ONLY

In this example, SCO2 Controller turns the Energy Recovery Ventilator (ERV) on at High speed when CO2 level exceeds SCO2 Controller Relay setting.

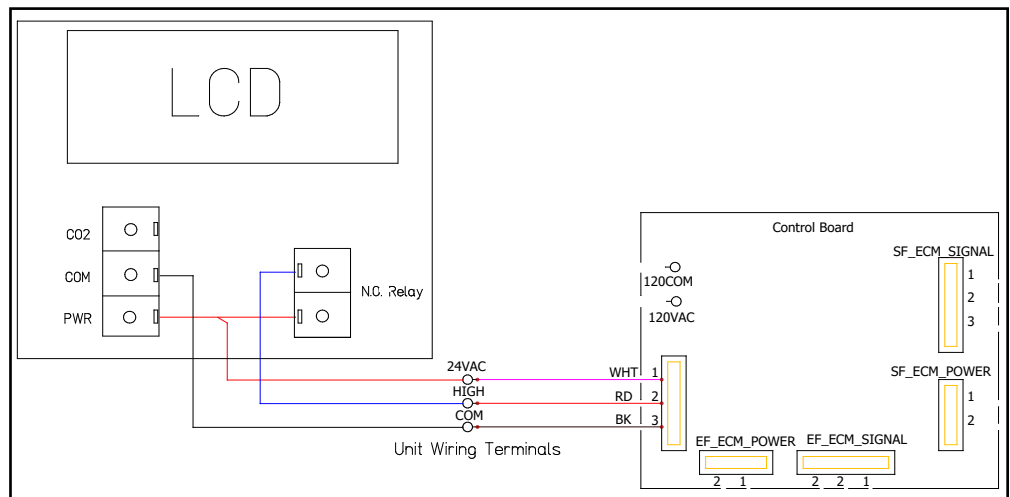


FIGURE 3.1.1 WIRING SCHEMATIC FOR TR_e AND TRLP_e-SERIES UNITS

In this example, the ERV does not run while unoccupied, set by timer. During occupancy, ERV runs at variable Speed. CO2 Controller sets speed based on CO2 levels. Remove the potentiometers by cutting the wires at the potentiometer. Cap the orange and purple wires from the potentiometer with wire nuts. HE07, HE10, and HE1.5 Circuit Board has two potentiometers and the cut wires can be wired in parallel back to the CO2 Controller.

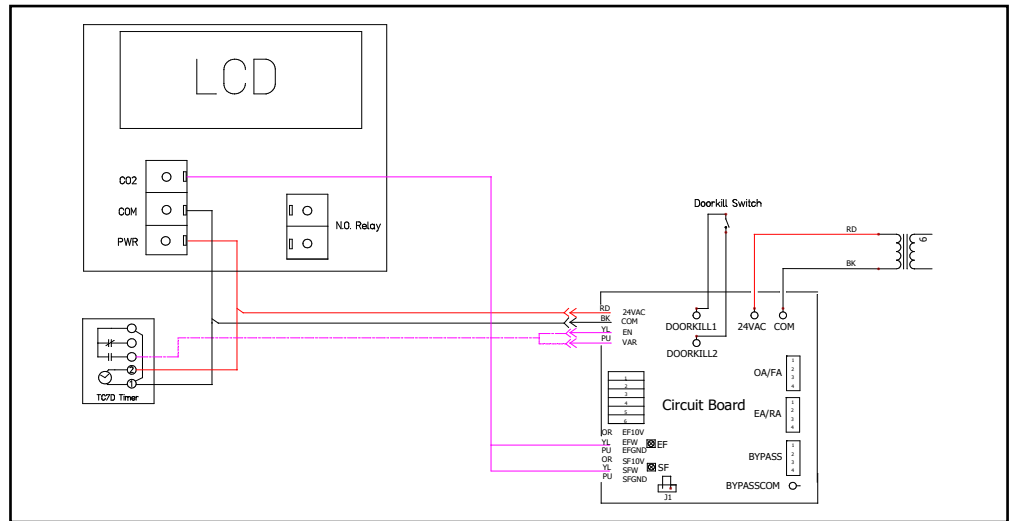


FIGURE 3.1.4 WIRING SCHEMATIC FOR TRCeN500, TRCeN800, TRCeN1200, AND TRCeN1600 UNITS WITH ECM AND CIRCUIT BOARD AND TIMER

NOTES:

S&P USA VENTILATION SYSTEMS

Enabling the World to Breathe Better Air



S&P USA VENTILATION SYSTEMS, LLC

6393 Powers Avenue
Jacksonville, FL 32217
SolerPalau-USA.com
800.961.7370

S&P CANADA VENTILATION PRODUCTS, INC.

6710 Maritz Drive, Unit 7
Mississauga, ON L5W 0A1, Canada
SolerPalauCanada.com
416.744.1217

Soler&Palau
Ventilation Group



138229_006 (02/26)