



SMC Occupancy Sensor

ACCESSORY

Supplemental Installation Manual



SMC-C Ceiling Mount



SMC-W Wall Mount

1.0 OVERVIEW	3
1.1 SPECIFICATIONS	3
2.0 INSTALLATION	3
2.1 SMC-C CEILING MOUNT	3
2.2 SMC-W WALL MOUNT	3
3.0 SETTINGS	4
3.1 ADJUSTMENT KNOBS	4
3.2 DIP SWITCHES	4
4.0 ELECTRICAL	5
4.1 WIRING SCHEMATICS	5

TABLE OF ILLUSTRATIONS

Figure 2.1.0 SMC-C Ceiling Mount Installation.....	3
Figure 2.2.0 SMC-W Wall Mount Installation.....	3
Figure 3.1.0 Knob Adjustment Table.....	4
Figure 3.1.1 Infrared Range Adjustment.....	4
Figure 3.1.2 Delayed—Off Time Adjustment.....	4
Figure 3.2.0 Dip Switch Setting Table.....	4
Figure 3.2.1 SMC-C Dip Switches.....	5
Figure 3.2.2 SMC-W Dip Switches.....	5
Figure 4.1.0 TR90, TR130, and TR200 Schematic.....	5
Figure 4.1.1 TRe and TRLPe110 Schematic.....	6
Figure 4.1.2 TReN and TRLPeN110 Schematic.....	6
Figure 4.1.3 TRCeN500, TRCeN800, TRCeN1200, and TRCeN1600—ECM with Circuit Board (speed 1-low speed on/off) Schematic.....	7
Figure 4.1.4 RH-W Heater Accessory Thermostat Schematic.....	7

1.0 OVERVIEW

1.1 SPECIFICATIONS

- ♦ Passive infrared sensor
- ♦ Adjustable time-off delay to 30 minutes
- ♦ 24VAC power requirement
- ♦ Ceiling mount or directable wall mount
- ♦ Coverage floor space
 - Ceiling mount: 1500 sq. ft.
 - Wall mount: 2500 sq. ft.
- ♦ Major motion area
 - Ceiling mount: 50 ft. diameter
 - Wall mount: 68 x 50 ft.

Model	Volts	Current	Isolated Relay	Coverage Area	Suggested Mounting Height
SMC-C	15-28VAC	30 mA	1 A @ 30 VAC/DC	1500 sq. ft.	8-10 ft.
SMC-W	15-28VAC	30 mA	1 A @ 30 VAC/DC	2500 sq. ft.	8-10 ft.

2.0 INSTALLATION

2.1 SMC-C CEILING MOUNT

See the Leviton installation instructions provided in the original box for in-details or for more options.

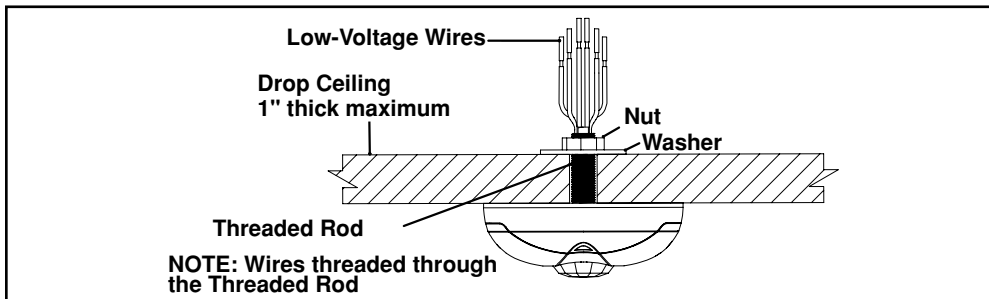


FIGURE 2.1.0 SMC-C CEILING MOUNT INSTALLATION

2.2 SMC-W WALL MOUNT

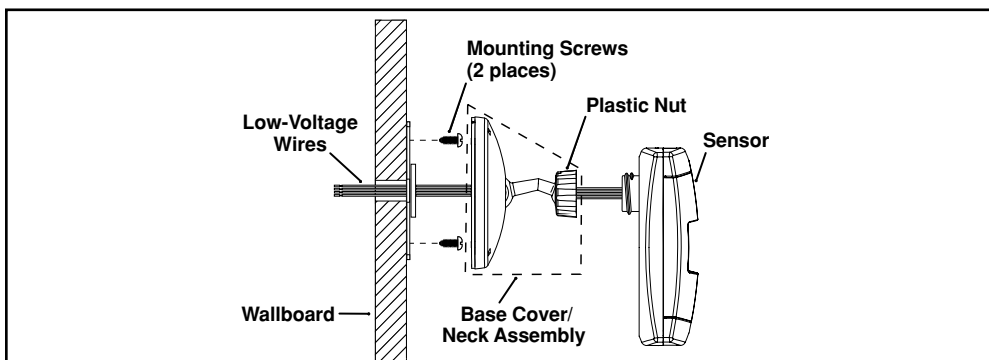


FIGURE 2.2.0 SMC-W WALL MOUNT INSTALLATION

3.0 SETTINGS

3.1 ADJUSTMENT KNOBS





KNOB COLOR	SYMBOL	FUNCTION	KNOB SETTING	FACTORY DEFAULT SETTING
Red		Sets the infrared range	Range Setting Full CCW = min. (OFF) Full CW = max.	75% 
Black		Delayed-Off Time	Full CCW = min. (30 sec.) Full CW = max. (30 min.)	50% (10 min.) 

FIGURE 3.1.0 KNOB ADJUSTMENT TABLE

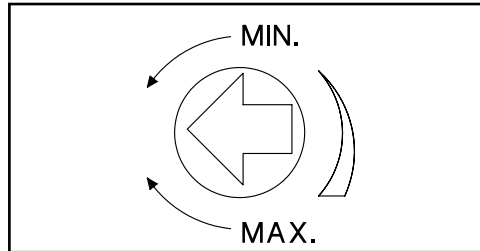


FIGURE 3.1.1 INFRARED RANGE ADJUSTMENT

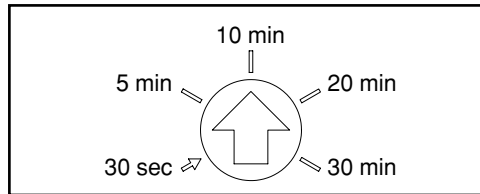


FIGURE 3.1.2 DELAYED—OFF TIME ADJUSTMENT

3.2 DIP SWITCHES

Switch	Switch Functions	Switch Settings	
	Bank A	OFF	ON
A1	N/A	N/A	N/A
A2	N/A	N/A	N/A
A3	Manual Mode	Auto Adapting Enabled	Auto Adapting Disabled
A4	Walk-Through Disabled	Walk-Through Enabled	Walk-Through Disabled
	Bank B	OFF	ON
B1	Override to ON	Auto Mode	Lights Forced ON
B2	Override to OFF	Auto Mode	Lights Forced OFF
B3	Test Mode	OFF c ON c OFF = Enter/Exit Test Mode	
B4	LEDs Disabled	LEDs Enabled	LEDs Disabled

FIGURE 3.2.0 DIP SWITCH SETTING TABLE

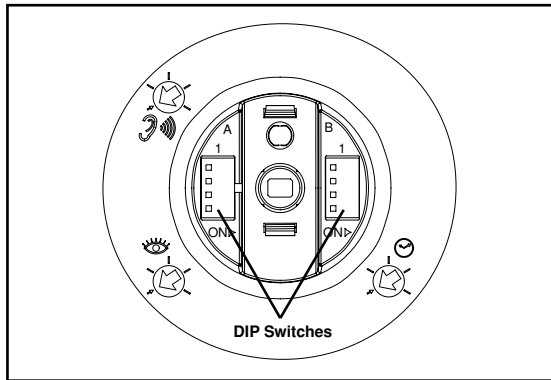


FIGURE 3.2.1 SMC-C DIP SWITCHES

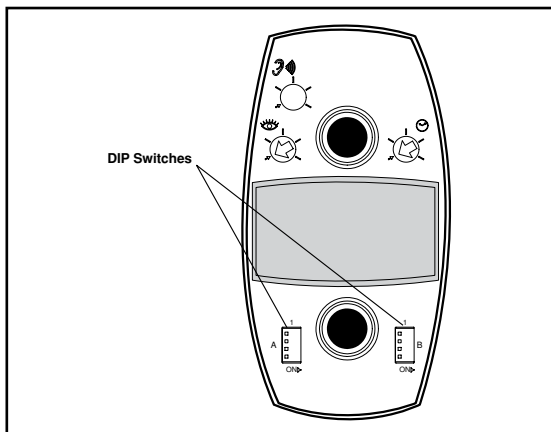


FIGURE 3.2.2 SMC-W DIP SWITCHES

4.0 ELECTRICAL

4.1 WIRING SCHEMATICS

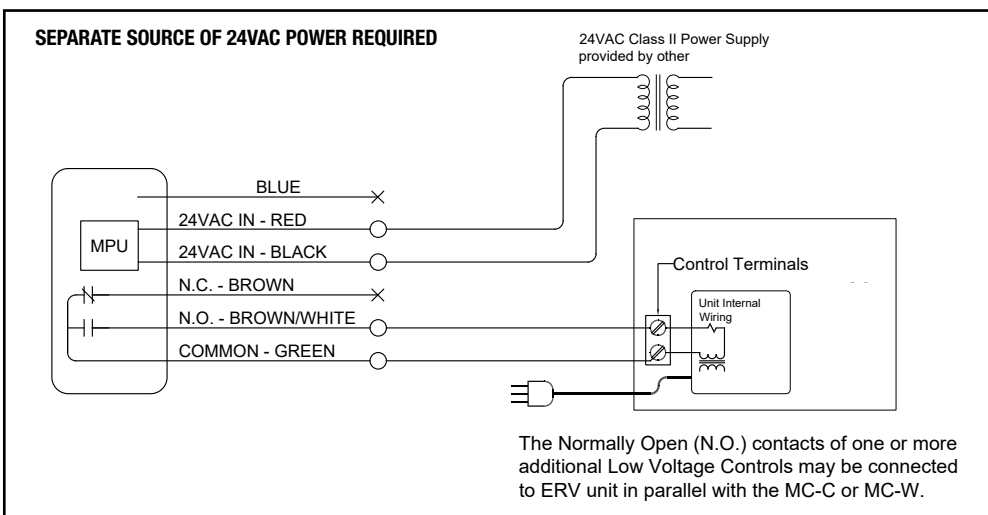


FIGURE 4.1.0 TR90, TR130, AND TR200 SCHEMATIC

In this example, Motion Control Occupancy Sensor turns Energy Recovery Ventilator (ERV) on at High speed when space is occupied.

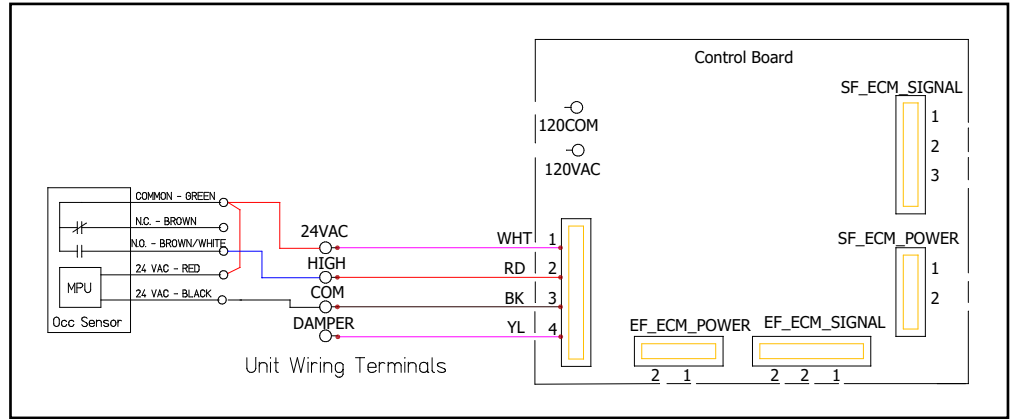


FIGURE 4.1.1 TRE AND TRLE110 SCHEMATIC

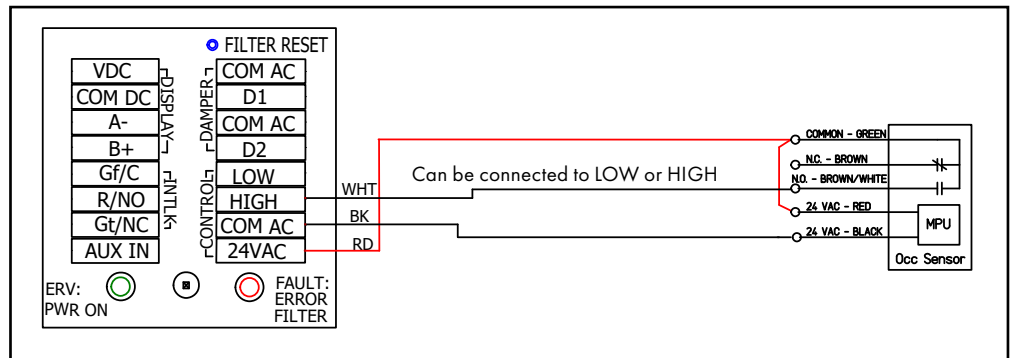


FIGURE 4.1.2 TReN AND TRLPeN110 SCHEMATIC

In this example, Motion Control Occupancy Sensor turns the ERV on at speed set by potentiometers when space is occupied.

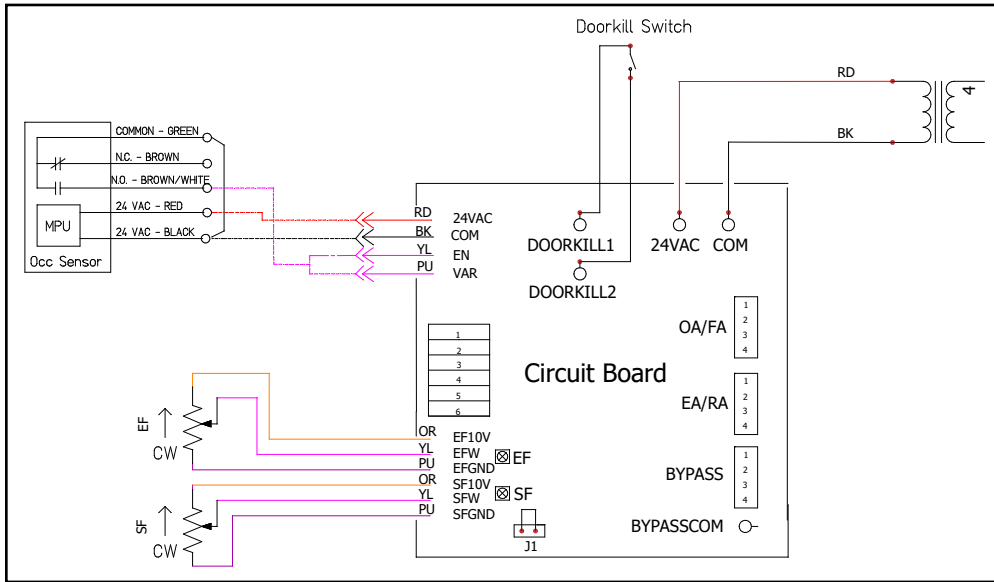


FIGURE 4.1.3 TRCeN500, TRCeN800, TRCeN1200, AND TRCeN1600—ECM WITH CIRCUIT BOARD (SPEED 1-LOW SPEED ON/OFF) SCHEMATIC

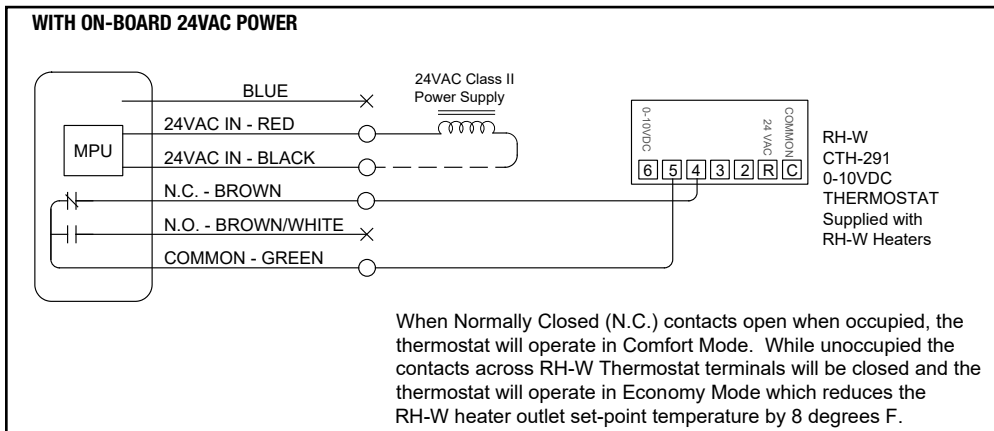


FIGURE 4.1.4 RH-W HEATER ACCESSORY THERMOSTAT SCHEMATIC

S&P USA VENTILATION SYSTEMS

Enabling the World to Breathe Better Air



S&P USA VENTILATION SYSTEMS, LLC

6393 Powers Avenue
Jacksonville, FL 32217
SolerPalau-USA.com
800.961.7370

S&P CANADA VENTILATION PRODUCTS, INC.

6710 Maritz Drive, Unit 7
Mississauga, ON L5W 0A1, Canada
SolerPalauCanada.com
416.744.1217



138281_007 (02/26)